



## Surface mounted closer

# 1250 Series

### Overview

The 1250 Series cast aluminum closer is designed for low-frequency and low abusive traffic areas. This cast aluminum closer is ideal for aluminum storefronts, interior offices and many other applications. Combining dependable operation, low maintenance and a patented stylish look - with or without the optional slim line cover. And with the most common hole pattern in the industry, the 1250 Series is the perfect choice for easy aftermarket replacement.

### Cylinder

#### 1250-3071

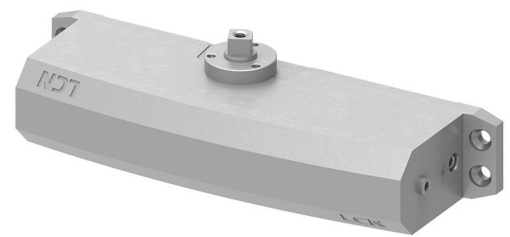
Cast aluminum cylinder assembly

#### Handing

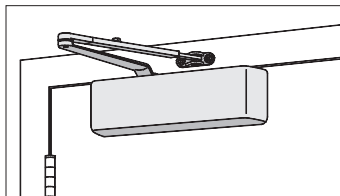
Non-handed

#### Sizing

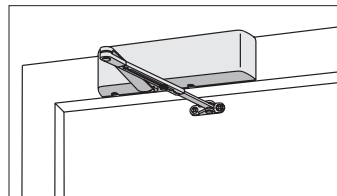
Adjustable spring size 1-5



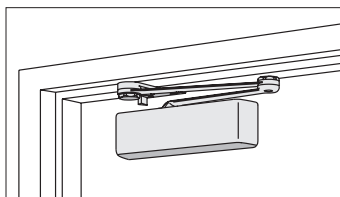
### Mounting



Hinge (pull side)



Top jamb (push side)



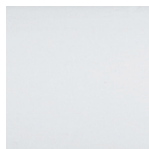
Parallel arm (push side)

## Finishes

### Powder coat finishes



**622**  
Matte Black



**689**  
Aluminum



**690**  
Statuary Bronze



**691**  
Light Bronze



**693**  
Gloss Black



**696**  
Dark Bronze



**695**  
Brass

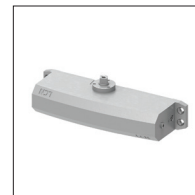
150+ additional custom  
colors available using the  
RAL numbering system

### Available finish options

SRI	For installations where a higher level of protection against weather conditions, or the effects of a potentially corrosive atmosphere is required, LCN offers a special rust inhibiting (SRI) process. Ferrous metal components receive an SRI pretreatment and a standard powder coat finish of your choice, or a custom powder coat finish for a nominal additional cost. Closers treated with the SRI process exceed the 100 hour protection level available with standard LCN powder coated finishes.
-----	---

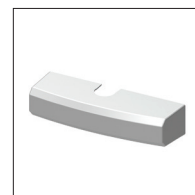
## Covers

### Standard cover



None

### Optional covers



**1250-72**  
**Slim line plastic cover**  

- Non-handed
- Optional

### Arms



- 1250-3077**  
**Regular Arm with Parallel Arm Bracket (RWPA)**
- Non-handed
  - Mounts hinge side or top jamb
  - Parallel arm includes PA shoe, 1250-62PA required for parallel arm mounting



- 1250-3077L**  
**Long Arm (LONG)**
- Non-handed
  - Includes long rod and shoe, 1250-79LR for top jamb mount with deep reveals
  - Optional



- 1250-3077EDA**  
**Extra Duty Arm (EDA)**
- Non-handed
  - Features solid forged steel main and forearm for potentially abusive installations
  - Optional



- 1250-3049EDA**  
**Hold Open Extra Duty Arm (HEDA)**
- Handed
  - Provides hold-open function adjustable at shoe
  - Optional



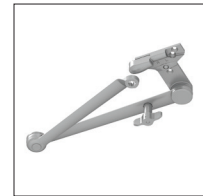
- 1250-3049**  
**Hold Open Arm with Parallel Arm Bracket (HWPB)**
- Non-handed
  - Mounts hinge side, top jamb or parallel arm (62PA required)
  - Hold-open adjustable at shoe
  - Optional



- 1250-3049L**  
**Hold Open Long Arm (HLONG)**
- Non-handed
  - Includes long head and tube, 1250-3048L for top jamb mount with deep reveals
  - Optional



- 1250-3077CNS**  
**Cush-n-Stop Arm (CUSH)**
- Non-handed
  - Features solid forged steel main arm and forearm with stop in soffit shoe
  - Optional



- 1250-3049SCNS**  
**Hold Open Cush-n-Stop Arm (HCUSH)**
- Non-handed
  - For abusive applications features solid forged steel main arm and forearm with spring loaded stop in the soffit shoe
  - Handle controls hold-open function
  - Optional



- 1250-3077SCNS**  
**Spring Cush-n-Stop Arm (SCUSH)**
- Non-handed
  - For abusive applications features solid forged steel main arm and forearm with spring loaded stop in the soffit shoe
  - Optional



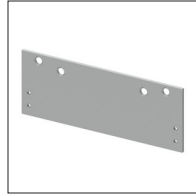
- 250-3049SCNS**  
**Spring Hold Open Cush-n-Stop Arm (SHCUSH)**
- Non-handed
  - For abusive applications features solid forged steel main arm and forearm with spring loaded stop in the soffit shoe
  - Handle controls hold open function
  - Optional

## Installation accessories



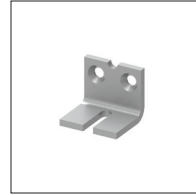
**1250-18  
Plate**

- Required for hinge side mount where top rail is less than 2 <sup>3</sup>/<sub>8</sub>" (60mm)
- Required for top jamb mounting where head frame is less than 1 <sup>3</sup>/<sub>4</sub>" (44 mm) or flush ceiling condition exists
- Requires minimum 1 <sup>1</sup>/<sub>2</sub>" (38 mm) minimum top rail or 1 <sup>1</sup>/<sub>4</sub>" (32 mm) head frame



**1250-18PA  
Plate**

- Required for parallel arm mounting where top rail is less than 4 <sup>1</sup>/<sub>2</sub>" (114mm), measured from the stop
- Requires 1 <sup>3</sup>/<sub>4</sub>" (44 mm) minimum top rail



**1250-30  
CUSH shoe support**

- Provide anchorage for fifth screw used with CUSH arms where reveal is less than 2 <sup>3</sup>/<sub>4</sub>" (70mm)



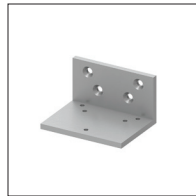
**1250-61  
Blade stop spacer**

- Lowers parallel arm shoe to clear <sup>1</sup>/<sub>2</sub>" (13 mm) blade stop



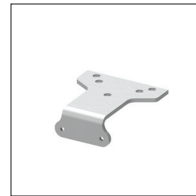
**1250-62A  
Auxiliary shoe**

- Requires a top rail of 7 <sup>1</sup>/<sub>8</sub>" (181mm). Optional shoe replaces -62PA for parallel arm mounting of regular arm with overhead holder/stop



**1250-419  
PA flush panel adapter**

- Provides horizontal mounting surface for PA, EDA or CUSH shoe on single rabbeted or flush frame



**1250-62PA  
PA shoe**

- Required for parallel arm mounting

## Fasteners

Universal screw pack (UNIV) included standard

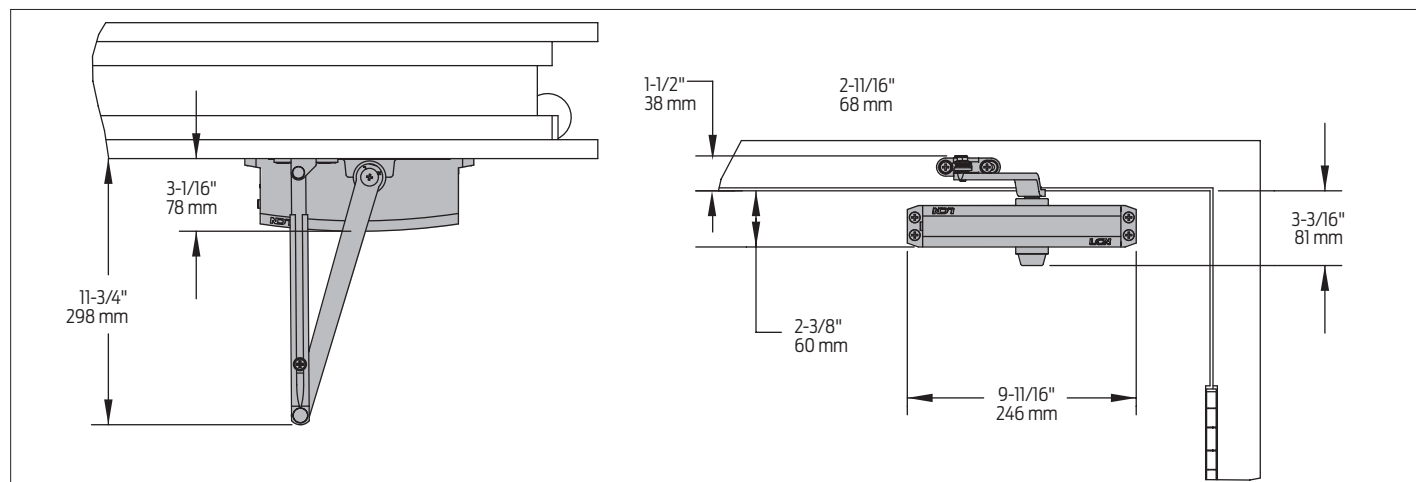
### Fastener pack options

TORX	TORX Machine Screw
TBTORX	TB <sup>1</sup> and TORX Machine Screw

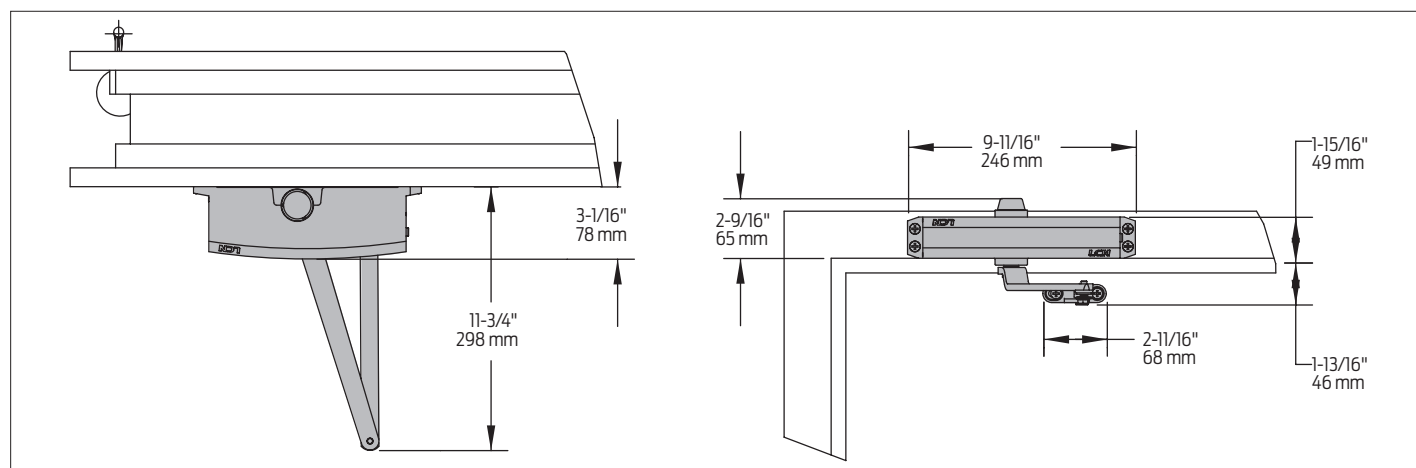
<sup>1</sup> Specify door thickness if other than 1-3/4"

### Dimensions and mounting

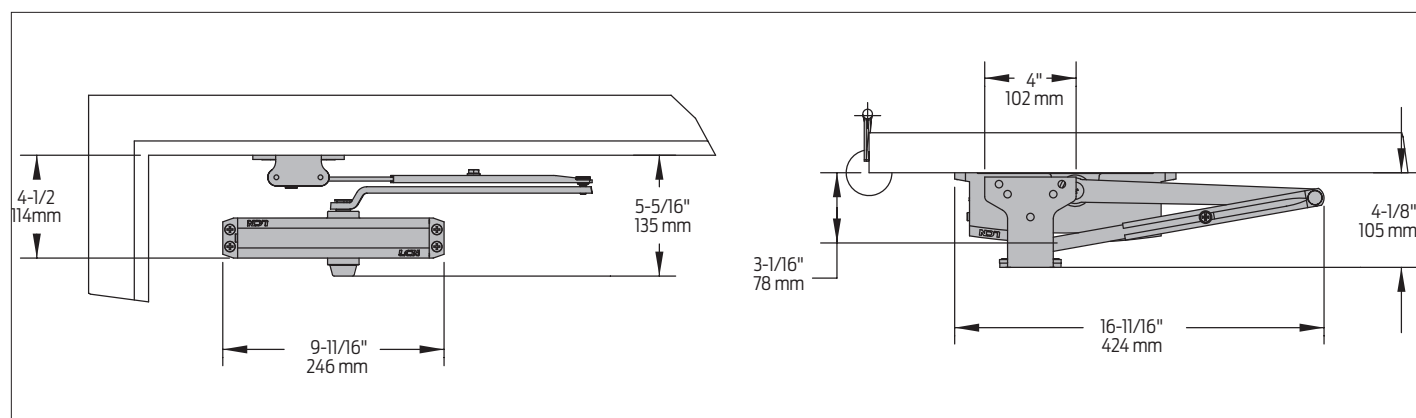
#### Hinge (pull) side mounting



#### Top jamb (push side) mounting

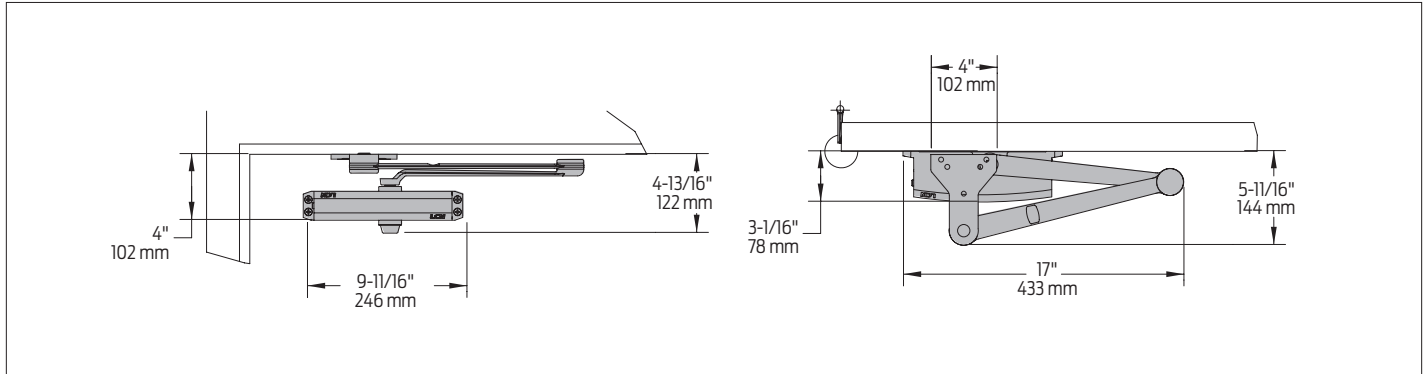


#### Parallel arm (push side) mounting

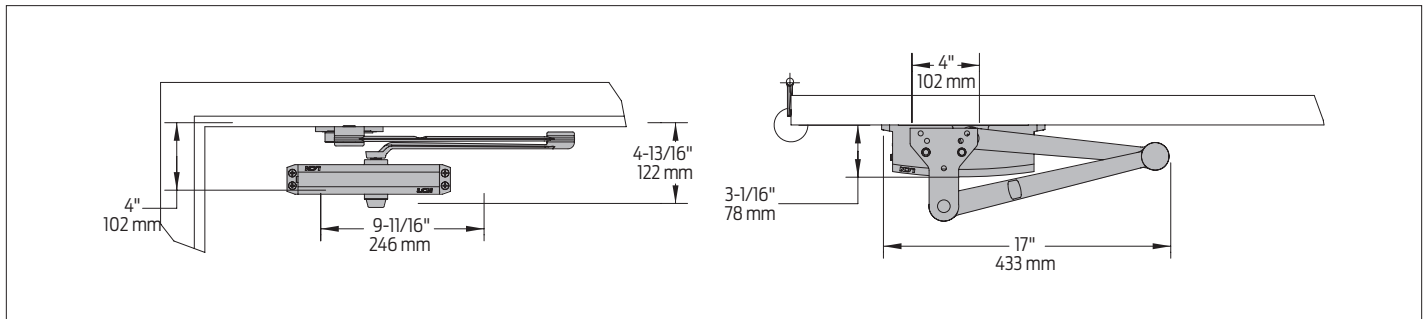


### Dimensions and mounting

#### EDA mount



#### CUSH/SCUSH mount



## Specifications

Accessibility	Available with less than 5.0 lbs. opening force on 36" door
Certifications/ approvals	<ul style="list-style-type: none"> <li>Grade 1 - ANSI A156.4</li> <li>UL 10C</li> <li>Meets BAA - Buy American Act</li> </ul>
Degree of operation	<p>Hinge (pull) side</p> <p>Max opening: 180°</p> <p>Hold open: 180°</p> <p>Top jamb (push side) mount</p> <p>Max opening: 180°</p> <p>Hold open: 180°</p> <p>Parallel arm with 62PA</p> <p>Max opening: 180°</p> <p>Hold open: 180°</p> <p>EDA</p> <p>Max opening: 180°</p> <p>Hold open: 180°</p> <p>Cush</p> <p>Max opening: 110°</p> <p>Hold open: 110°</p>
Environmental conditions	<ul style="list-style-type: none"> <li>Approved for interior use</li> <li>Approved for exterior use (SRI coated only)</li> <li>LCN's standard all weather fluid performs to temperature ranges from 120°F (49°C) to -30°F (-35°C)</li> <li>LCN's powder coat finish surpasses 100 hours of salt spray which is over four times the ANSI standard for corrosion resistance.</li> </ul>
Warranty	15 years
Standard features	<ul style="list-style-type: none"> <li>Cast aluminum body</li> <li>Full complement bearing</li> <li>1-3/8" diameter piston</li> <li>5/8" diameter single heat treated pinion journal</li> </ul>