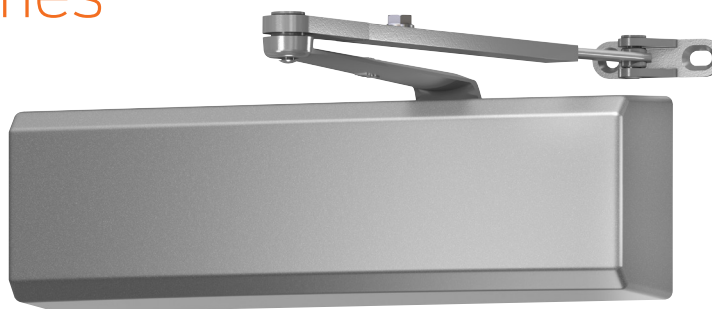


4050A Series



The 4050A Series cast aluminum closer is engineered for durability and built tough to excel in the harsh environments of high frequency, high abusive traffic areas. Featuring the most common commercial footprint, it is ideal for commercial building applications that demand a combination of quality, reliability and value.

Features

Certifications	Grade 1 - ANSI A156.4, UL 10C, ADA, 100 hour salt spray, meets BAA - Buy American Act
Body construction	<ul style="list-style-type: none"> Cast aluminum body Full complement bearing 1 1/2" diameter piston 11/16" diameter double heat treated pinion journal
Fluid	All weather liquid X fluid
Handing	Non-handed
Templating	2 3/8" x 6 3/4" mounting hole pattern
Size	Adjustable spring size 1-6
Warranty	25 years

Cover	<ul style="list-style-type: none"> Plastic, standard Metal, optional
Fasteners	Self reaming and tapping screws (SRT)
Mounting	Hinge (pull side), top jamb (push side), parallel arm (push side)
Arms	Standard regular arm
Finishes/colors/powder coat	<ul style="list-style-type: none"> 689 Aluminum 690 Statuary bronze 691 Light bronze 693 Black 695 Dark bronze 696 Brass Custom colors optional
	<ul style="list-style-type: none"> Optional SRI primer - powder coat only

Special templates

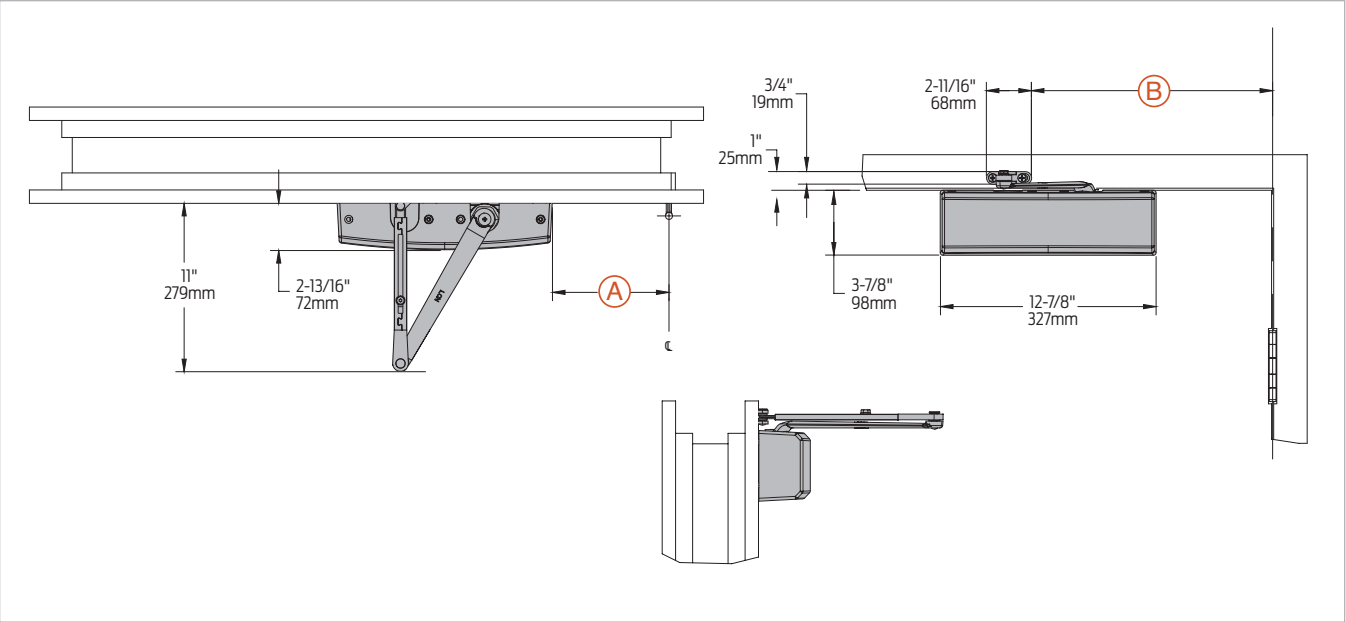
Customized installation templates or products may be available to solve non-standard applications. Contact LCN Product Support for assistance.

Mounting	Finish	Cover	Cylinder	Arm function*
Hinge (pull) side Top jamb (pull) Top jamb (push) Parallel arm Stop face	Powder coat Plated	Plastic Metal	Non-handed Non-sized Accessibility Delayed action AVB	Regular (double) Standard (single) Hold-open Fusible link EDA/HEDA CUSH/HCUSH SCUSH/SHCUSH Double egress
■ Available ■ Not available	■ Available ■ Not available	■ Available ■ Not available	■ Available ■ Not available	■ Available ■ Not available

■ Closer available with less than 5.0 lbs. opening force on 36" door.
 * Maximum opening/hold-open point with standard template.

Mounting details

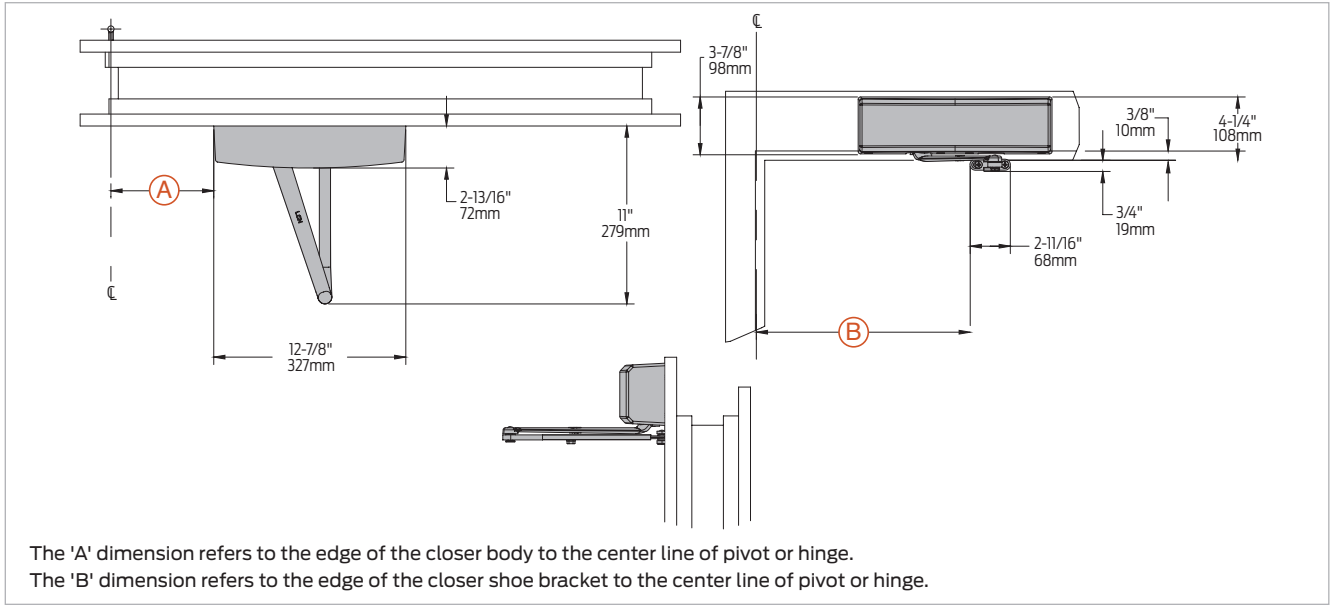
Hinge (pull) side mounting



Butt hinges	Should not exceed 5" (127 mm) in width
Auxiliary stop	Recommended at hold-open point or where a door cannot swing beyond templated maximum opening
Reveal	Should not exceed 3/4" (19 mm) for regular arm or hold-open arm
Top rail	<ul style="list-style-type: none"> Less than 3 7/8" (98 mm) requires PLATE, 4050A-18. Plate requires 1 13/16" (44 mm) minimum
Clearance	2 13/16" (72 mm) behind door required for 90° installation
Delayed action	Delays closing from 180°-70°. Delay time adjustable up to approximately 1 minute
Maximum opening	<ul style="list-style-type: none"> Templating allows up to 180° Hold-open points up to maximum opening with hold-open arm
	To 100°: A = 5 5/8" (143mm) B = 11 1/4" (286mm)
	100° to 120°: A = 4 3/8" (111mm) B = 10" (254mm)
	120° to 150°: A = 3 5/8" (92mm) B = 9 1/4" (235mm)
	150° to 180°: A = 2 5/8" (67mm) B = 8 1/4" (210mm)

Mounting details

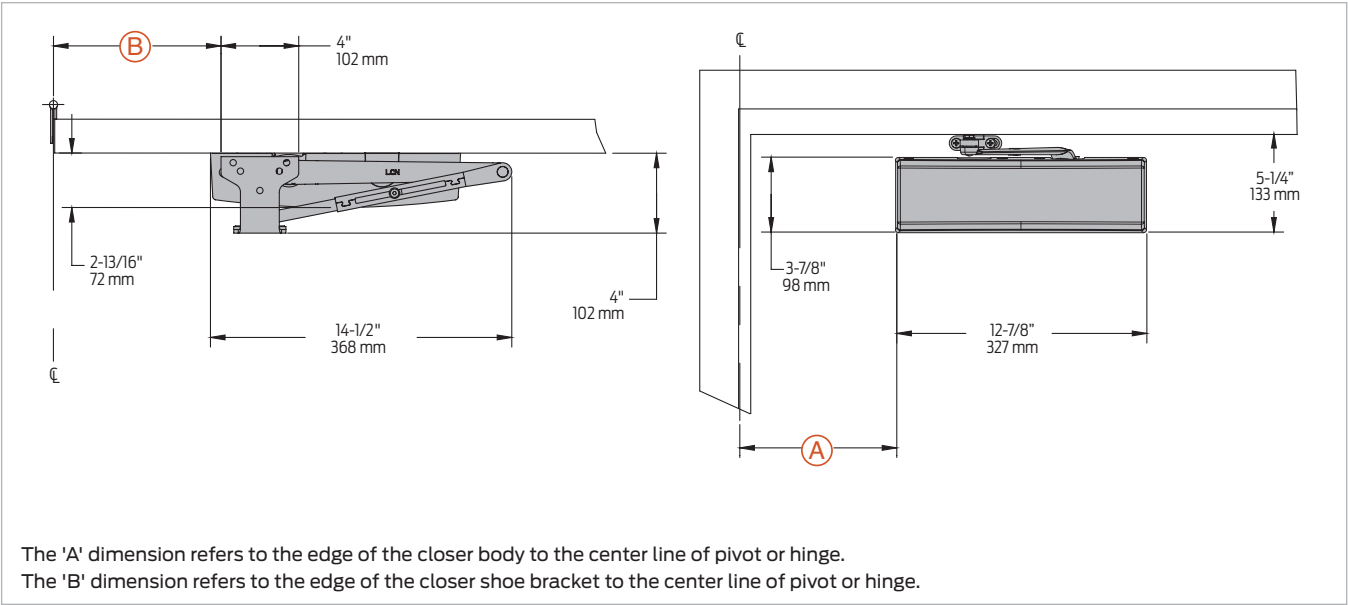
Top jamb (push) side mounting



Butt hinges	Should not exceed 5" (127 mm) in width		
Auxiliary stop	Recommended at hold-open point or where a door cannot swing beyond templated maximum opening		
Reveal	Arm type	Reveal	Max opening
	Regular arm	2 9/16"	Up to 180°
	Long	4 13/16"	Up to 165°
	Hold-open	2 9/16"	Up to 180°
	Long hold-open arm	4 13/16"	Up to 155°
Top rail	Requires 1 1/4" (32 mm) minimum 3 3/8" (86 mm) minimum with closer on PLATE, 4050A-18G		
Head frame	Less than 3 7/8" (98 mm) requires plate.		
Delayed action	Delay closing from 180° to 70°. Delay time adjustable up to approximately 1 minute.		
Maximum opening	<ul style="list-style-type: none">Templating allows up to 180°Hold-open points up to maximum opening with hold-open arm		
	To 100°: A = 5 5/8" (143mm) B = 11 1/4" (286mm)		
	100° to 120°: A = 4 3/8" (111mm) B = 10" (254mm)		
	120° to 150°: A = 3 5/8" (92mm) B = 9 1/4" (235mm)		
	150° to 180°: A = 2 5/8" (67mm) B = 8 1/4" (210mm)		

Mounting details

Parallel arm (push) side mounting



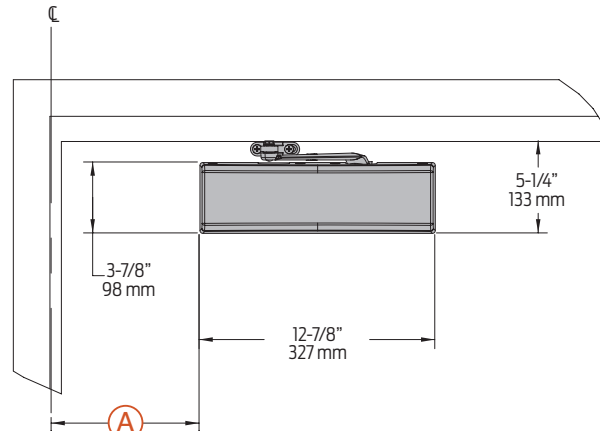
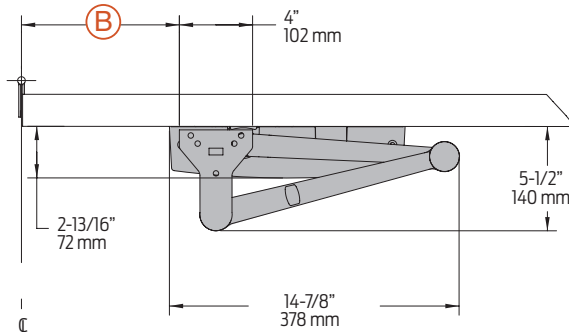
Butt hinges	Should not exceed 5" (127 mm) in width
Auxiliary stop	Recommended at hold-open point, where the door cannot swing beyond templated maximum opening, or where CUSH-N-STOP arm is not used
Top rail	Less than 5 1/4" (133mm) measured from the stop requires PLATE, 4050A-18PA. Plate requires 2" (51mm) minimum from the stop
Clearance	For 4050A-62PA shoe is 4" (102mm) from door face
Head frame	Flush or rabbetted requires PA SHOE ADAPTER, 4050A-419
Stop width	Minimum 1" (25mm)
Blade stop	Clearance requires 1/2" (13mm) BLADE STOP SPACER, 4050A-61
Delayed action	Delays closing from 180°-70°. Delay time adjustable up to approximately 1 minute
Auxiliary shoe	4050A-62A allows installation of regular arm with overhead holder/stop
Maximum opening	To 100°: A = 7 3/8" (187mm) B = 8 3/8" (213mm) 100° to 130°: A = 6 3/8" (162mm) B = 7 3/8" (187mm) 130° to 150°: A = 5 7/8" (149mm) B = 6 7/8" (175mm) 150° to 180°: A = 4 7/8" (124mm) B = 5 7/8" (149mm) Hold-open points up to maximum opening with hold-open arm

Note: Optional mounting requires PA SHOE, 4050A-62PA for regular or HOLD-OPEN arms

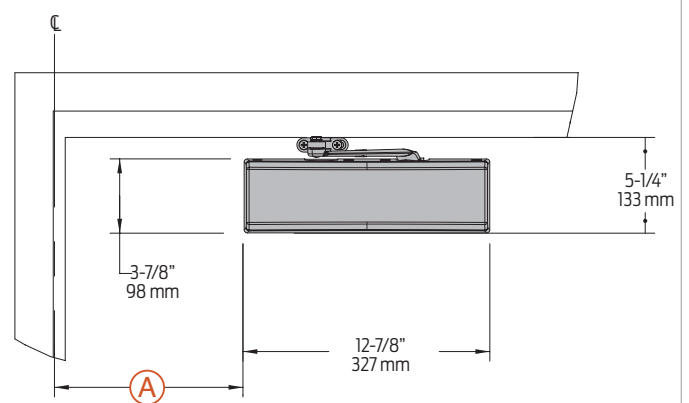
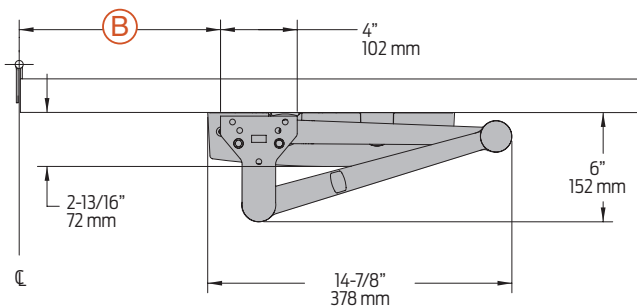
Mounting details

EDA and CUSH mounting

EDA mount



CUSH mount



The 'A' dimension refers to the edge of the closer body to the center line of pivot or hinge.

The 'B' dimension refers to the edge of the closer shoe bracket to the center line of pivot or hinge.

Clearance	4050A-62EDA is 5 1/2" (140mm) from door face. 6" (152mm) for CUSH	
Head frame	Flush or rabbeted requires FLUSH PANEL ADAPTER, 4050A-419	
CUSH ARM	Requires CUSH SHOE SUPPORT, 4050A-30 for fifth screw anchorage where reveal is less than 3 1/16" (78mm)	
Delayed action	Delays closing from 180° to approximately 70°. Delay time adjustable up to approximately 1 minute.	
Maximum opening	EDA arm can be templated for points at: 100° CUSH arms can be templated for opening/hold-open point at:	
	100°: A = 6 3/8" (162mm) B = 7 3/4" (197mm)	85°: A = 7 7/8" (200mm) B = 9 1/8" (232mm)
	100° to 130°: A = 4 7/8" (124mm) B = 6 1/4" (159mm)	90°: A = 7 1/8" (181mm) B = 8 1/2" (216mm)
	130° to 150°: A = 3 7/8" (98mm) B = 5 1/4" (133mm)	95°: A = 6 1/2" (165mm) B = 7 7/8" (200mm)
	150° to 180°: A = 2 7/8" (73mm) B = 4 1/4" (108mm)	100°: A = 6" (152mm) B = 7 1/4" (184mm)
	Hold-open points up to maximum opening with HEDA arm	105°: A = 5 1/2" (140mm) B = 6 7/8" (175mm)
		110°: A = 5" (127mm) B = 6 3/8" (162mm)

Notes:

- Spring Cush dead stop points are approximately 5° more than templated stop point
- Hold open at templated stop points
- 4050A Series closers ordered with EDA or CUSH arms include 4050A-201 FIFTH HOLE SPACER to support the shoe

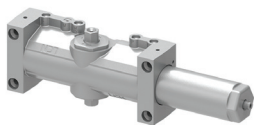
Accessories

Cylinders



4050A-3071
Cast iron cylinder assembly

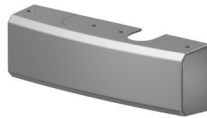
- Non-handed
- Heavy duty



4050A-3071 DEL
Cast iron cylinder assembly

- Cylinder used for delayed action closing
- Non-handed
- Heavy duty

Covers



4050A-72
Plastic cover

- Non-handed
- Standard



4050A-72MC
Metal cover

- Non-handed
- Required for plated finishes and custom powder coat finishes
- Optional

Alternate cover



4050A-72ALT
Alternate cover

- Non-handed
- Optional, sold separately (not packed with closer)

Arms



4050A-3077
Regular arm

- Non-handed
- Mounts pull side or top jamb with shallow reveal
- Includes PA shoe, 4050A-62PA required for parallel arm mounting



4050A-3077L
Long arm

- Non-handed
- Includes long rod and shoe, 4050A-79LR for top jamb mount
- Optional



4050A-3049
Hold-open arm

- Non-handed
- Mounts pull side or top jamb with shallow reveal
- Hold-open adjustable shoe
- 4050A closer includes 4050A-62PA shoe required for parallel arm mounting
- Optional



4050A-3049L
Long hold-open arm

- Non-handed
- Hold-open adjustable shoe
- Includes long head and tube, 4050A-3048L for top jamb mount
- Optional



4050A-3077EDA
Extra duty arm

- Non-handed
- Features forged, solid steel main and forearm for potentially abusive installations



4050A-3049EDA
Hold-open extra duty arm

- Handed
- Features forged, solid steel main and forearm for potentially abusive installations
- Hold-open function is adjusted at the shoe



4050A-3077EDA/62G
Extra duty arm with 62G

- Non-handed
- Features forged, solid steel main and forearm for potentially abusive installations
- 62G shoe provides additional blade stop clearance for use with additional door hardware such as an overhead holder



4050A-3049EDA/62G
Hold-open extra duty arm with 62G

- Handed
- Features forged, solid steel main and forearm for potentially abusive installations
- 62G shoe provides additional blade stop clearance for use with additional door hardware such as an overhead holder
- Hold-open function is adjusted at the shoe

Accessories

Arms (cont.)


**4050A-3077CNS
Cush-N-Stop® arm**

- Non-handed
- Features solid forged steel main arm and forearm with stop in soffit shoe
- Optional


**4050A-3049CNS
HCUSH arm**

- Provides hold-open function with templated stop/hold-open points
- Handle controls hold-open function

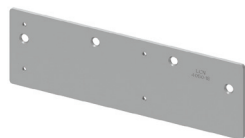

**4050A-3077SCNS
Spring CUSH arm**

- Non-handed
- For potentially abusive applications features solid forged steel main arm and forearm with spring loaded stop in the soffit shoe
- Optional

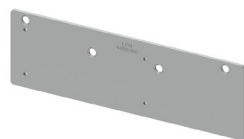

**4050A-3049SCNS
Spring HCUSH arm**

- Non-handed
- For potentially abusive applications features solid forged steel main arm and forearm with spring loaded stop in the soffit shoe
- Handle controls hold-open function
- Optional

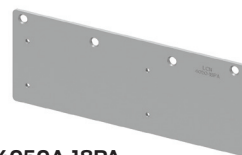
Installation accessories


**4050A-18
Plate**

- Required for hinge side mount where top rail is less than 3 7/8" (98 mm)
 - Requires minimum 1 3/4" (44 mm) top rail


**4050A-18G
Plate**

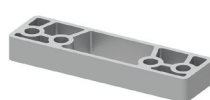
- Locates top jamb mounted closer flush with top of head frame face in flush ceiling condition
- Contact LCN Product Support for minimum head frame requirement


**4050A-18PA
Plate**

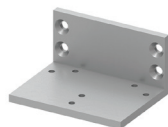
- Required for parallel arm mounting where top rail is less than 5 3/4" (146 mm), measured from the stop
 - Requires 2 1/4" (57 mm) minimum top rail


**4050A-30
CUSH shoe support**

- Provides anchorage for fifth screw used with CUSH arms, where reveal is less than 3 1/16" (78 mm)


**4050A-61
Blade stop spacer**

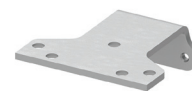
- Required to lower parallel arm shoe to clear 1/2" (13 mm) blade stop


**4050A-419
Flush panel adapter**

- Provides horizontal mounting surface for parallel arm shoe on single rabbetted or flush frame


**4050A-62A
Auxiliary shoe**

- Requires a top rail of 7 13/16" (198 mm)
- Replaces -62PA for parallel arm mounting of regular arm with overhead holder/stop
- Optional


**4050A-62PA
PA shoe**

- Required for parallel arm mounting

Ordering information

How-to-order 4050A Series closers

1. Select finish

- ☐ Standard powder coat _____
Aluminum, Dark Bronze, Statuary,
Light Bronze, Black, Brass.

Closer will be shipped with:

- Standard cylinder
- Standard cover
- Tri pack arm (Rw/PA)
- Self-reaming and tapping screws
(unless options listed below are selected)

Closer options

Cylinder

- ☐ Delayed action (4050A DEL)

Cover

- ☐ Metal (specify right or left hand)(MC)
☐ Alternate cover (ALT)

Finish

- ☐ Custom powder coat (RAL) _____
(handed metal cover required)
☐ SRI primer
(use with powder coat finishes only)

Arm

- ☐ Regular (REG)
☐ Long (LONG)
☐ Hold-open (H)
☐ Hold-open w/62PA (Hw/PA)
☐ Long hold-open (HLONG)
☐ Extra duty arm (EDA)
☐ Extra duty arm with 62G (EDA/62G)
☐ Hold-open extra duty arm
(HEDA) (handed)

- ☐ Hold-open extra duty arm with 62
(HEDA/62G) (handed)
☐ Cush-N-Stop (CUSH)
☐ HCush-N-Stop (HCUSH)
☐ Spring CUSH (SCUSH)
☐ Spring HCUSH (SHCUSH)

Optional screw packs

- ☐ TB¹ and SRT screw (TBSRT)
☐ Wood and machine screw (WMS)
☐ TB¹, wood and machine screw
(TBWMS)
☐ TORX machine screw (TORX)
☐ TB¹ and TORX machine screw
(TBTRX)

Installation accessories

- ☐ Plate, 4050A-18
☐ Plate, 4050A-18G
☐ Plate, 4050A-18PA
☐ CUSH shoe support, 4050A-30
☐ Blade stop spacer, 4050A-61

- ☐ Auxiliary shoe, 4050A-62A
☐ Flush panel adapter,
4050A-419

Special template

- ☐ ST- _____

1. Specify door thickness if other than 1 3/4".

Table of sizes

- 4050A cylinders are adjustable from size 1 through size 6 and is shipped set to size 3
- Closing power of 4050A Series closers may be adjusted 50%

Exterior (and vestibule) door width

	24"	30"	36"	42"	48"
	610mm	762mm	914mm	1067mm	1219mm
*4050A	size 3	size 4	size 5	size 6	
	Minimum door width				

Interior door width

	24"	34"	38"	48"	54"	60"
	610mm	864mm	965mm	1219mm	1372mm	1524mm
*4050	size 2	size 3	size 4	size 5	size 6	
	Minimum door width					

➔ Indicates recommended range of door width for closer size.
* Adjustable Size 1 thru 5.

Reduced opening force 4050A Series closers

CAUTION! Any manual door closer, including those certified by BHMA to conform to ANSI Standard A156.4, that is selected, installed and adjusted based on ADA or other reduced opening force requirements may not provide sufficient power to reliably close and latch a door.

Refer to Automatic Operators section for information on systems that meet reduced opening force requirements without effecting closing power.

Door width	36"	42"	48"
8.5* lbs.	4050A	4050A	4050A
5.0* lbs.	4050A	4050A	4050A

* Maximum opening force.