

# FEATURES



# FEATURES

- # FEATURES



# FEATURES

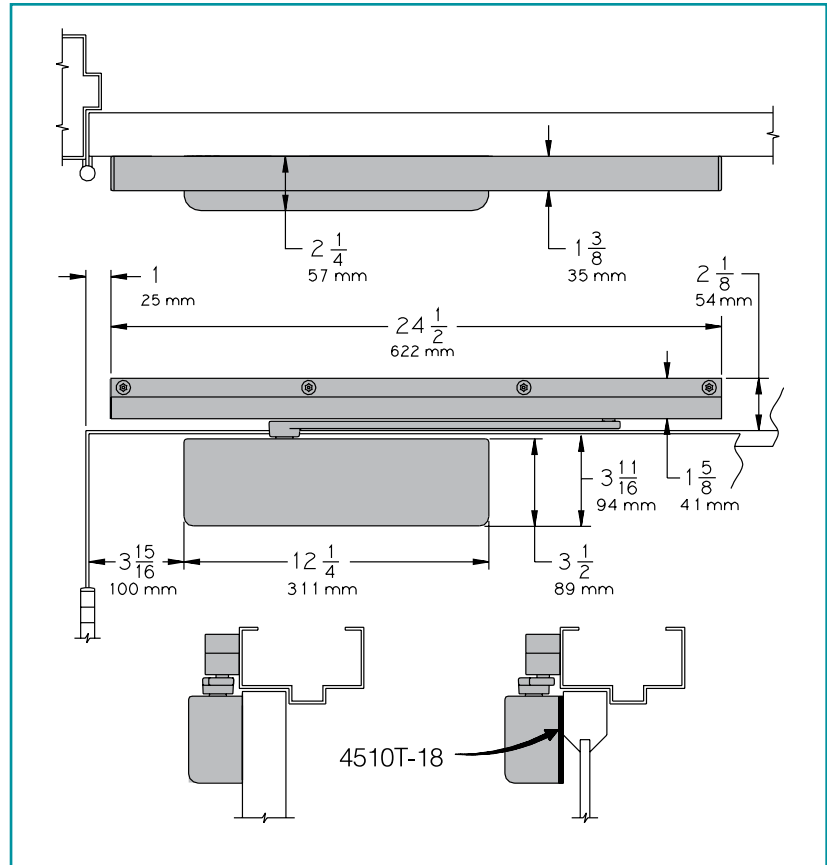
# 4510T SERIES

## HINGE (PULL) SIDE MOUNTING

### MAXIMUM OPENING

Templating allows 180°.

Consult factory if door will be held open at 180°.



- Butt Hinges should not exceed 5" (127 mm) in width.
- Auxiliary Stop is recommended where a door cannot swing 180°.
- Reveal should not exceed 1/8" (3 mm).
- Top Rail less than 3-3/4" (95 mm), requires PLATE 4510T-18. Plate requires 2" (51 mm) minimum top rail.
- Head Frame minimum 2-1/8" (54 mm).
- Clearance of 2-1/4" (57 mm) behind door required for installation.
- Advanced Variable Backcheck cylinder starts backcheck at approximately 45° instead of the normal 75°. Add suffix "AVB" to selected cylinder (eg. 4513T AVB).

### Options

- Advanced Variable Backcheck cylinder.

### Special Templates

Customized installation templates or products may be available to solve unusual applications. Contact LCN Product Support for assistance.

# 4510T SERIES

## ACCESSORIES

### CYLINDERS

#### CYLINDER, 4510T-3071

Standard, handed cast iron cylinder assembly.

For various applications see "Table of Sizes" on 4510T Series page 22.

### COVER

#### SECURITY COVER, 4510T-72MC

Handed, heavy gauge metal security cover.

Four point TORX mounting for extra security.

Closer adjustments not accessible with cover installed.

### ARM

#### STANDARD SECURITY ARM, 4510T-3077T

Handed arm features solid forged steel, large cross section arm.

Special threaded attachment of track roller for potentially abusive installations.

Double slab arm/pinion attachment for maximum strength.

Can only be used with high security track roller, 4510T-3034.

### TRACK

#### SECURITY TRACK, 4510T-3038

Non-handed, high security track.

Designed to eject foreign objects placed in track during either opening or closing motion.

Requires track roller, 4510T-3034.

#### SECURITY TRACK ROLLER, 4510T-3034

Low friction track roller threads into 4510T-3077T arm for extra strength and security.

Can not be removed without disconnecting arm from closer.

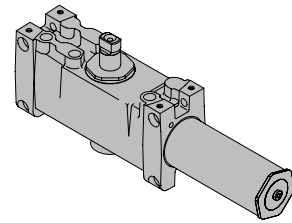
### INSTALLATION ACCESSORIES

#### PLATE, 4510T-18

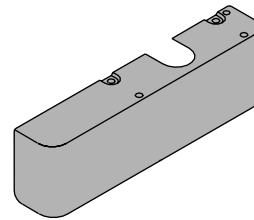
Required where top rail is less than 3 3/4" (95 mm).

Plate requires minimum 2" (51 mm) top rail.

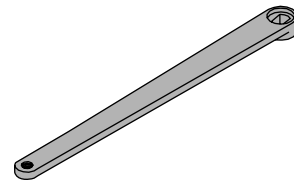
3071



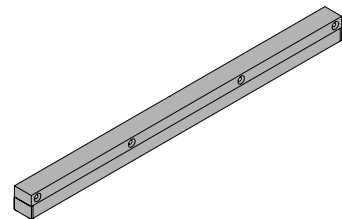
72MC



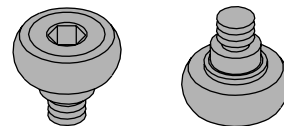
3077T



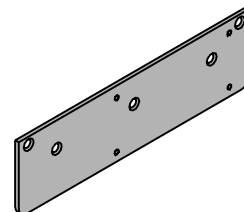
3038



3034



18



# 4510T SERIES

## TABLE OF SIZES

Select closer based on width of door.

Sized 4510T Series cylinders available in size 1, 3 or 4.

Closing power of all 4510T Series closers may be increased 15%.

### INTERIOR DOOR WIDTH

	26" 660mm	34" 864mm	38" 965mm	48" 1219mm
	size 1	size 3	size 4	
4511T	→			
4513T		→		
4514T			→	


Minimum  
Door  
Width

→ Indicates recommended range of door width for closer size.

## REDUCED OPENING FORCE 4510T CLOSERS

**CAUTION!** Any manual door closer, including those certified by BHMA to conform to ANSI Standard A156.4, that is selected, installed and adjusted based on ADA or other reduced opening force requirements may not provide sufficient power to reliably close and latch a door.

Refer to POWER OPERATORS section for information on systems that meet reduced opening force requirements without affecting closing power.

	DOOR WIDTH	36"	42"	48"
	8.5* lbs.	4513T	4513T	4513T
	5.0* lbs.	4511T	4511T	4511T

\* Maximum opening force.

## HOW-TO-ORDER 4510T SERIES CLOSERS

### 1. SELECT CYLINDER SIZE

- ☐ 4511T (ADA)
- ☐ 4513T
- ☐ 4514T

### 2. SPECIFY HAND

- ☐ RH
- ☐ LH

### 3. SPECIFY FINISH

- ☐ Standard Powder Coat \_\_\_\_\_  
Aluminum, Dark Bronze, Statuary,  
Light Bronze, Black, Brass.

#### Closer will be shipped with:

- SECURITY COVER,
  - STANDARD SECURITY ARM,
  - SECURITY TRACK ROLLER,
  - SECURITY TRACK,
  - TORX MACHINE SCREW PACK,
- unless options listed below are selected.*

## CLOSER OPTIONS

### CYLINDER

- ☐ Advanced Variable Backcheck (AVB)

### FINISH

- ☐ Custom Powder Coat (RAL) \_\_\_\_\_
- ☐ Plated Finish, US \_\_\_\_\_
- ☐ SRI primer (use with powder coat finishes only)

### SCREW PACK

- ☐ TB\* and TORX Machine Screw (TBTRX)  
\* Specify door thickness if other than 1-3/4".

### INSTALLATION ACCESSORIES

- ☐ PLATE, 4510T-I8

### SPECIAL TEMPLATE

- ☐ ST- \_\_\_\_\_

*NOTE: Installation of this closer requires T-27 and T-25 driver bits for TORX machine screws with a security pin. Sold separately.*

