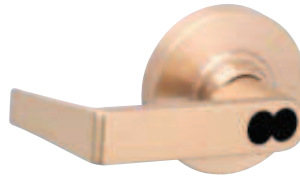


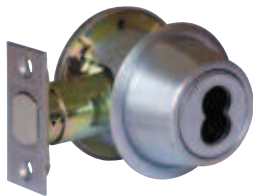
## Small Format (Best Style) Interchangeable Core Availability



**AL-Series**  
**Saturn design**



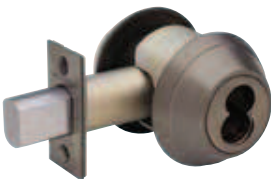
**ND-Series lever**  
**all designs**



**B500-Series**



**L400-Series**



**B600 / 700-Series**



**L9000-Series**  
**all designs**



**KC 11-Series,**  
**KC 21-Series,**  
**KC 41-Series**  
**padlocks**



**KC 72-Series,**  
**KC 82-Series,**  
**KC 92-Series**  
**padlocks**



**KC215-Series**

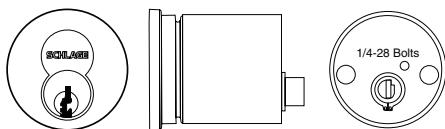
# Small Format Interchangeable Core Cylinders for Schlage Locksets



## Small Format Core Only

Number	Mechanism
80-036	7-pin Everest B Family restricted keyway core uncombined
80-037	7-pin Everest B Family restricted keyway core combined
80-043	6-pin Best keyway core, uncombined
80-033	7-pin Best keyway core, uncombined

- Notes
1. Available 606 and 626 finish only.
  2. Suffix keyway, e.g. 80-036 B235, 80-043 AB, etc.
  3. Proper authorization required for Everest cores. Order control keys separately.
  4. 80-043 and 80-033 available in Best A, D, E, F, G, H, J, K, L and M keyways. Suffix "B" to keyway letter, e.g. AB, DB, etc.



## Small Format IC Housing for Commercial Deadlocks, Less Core

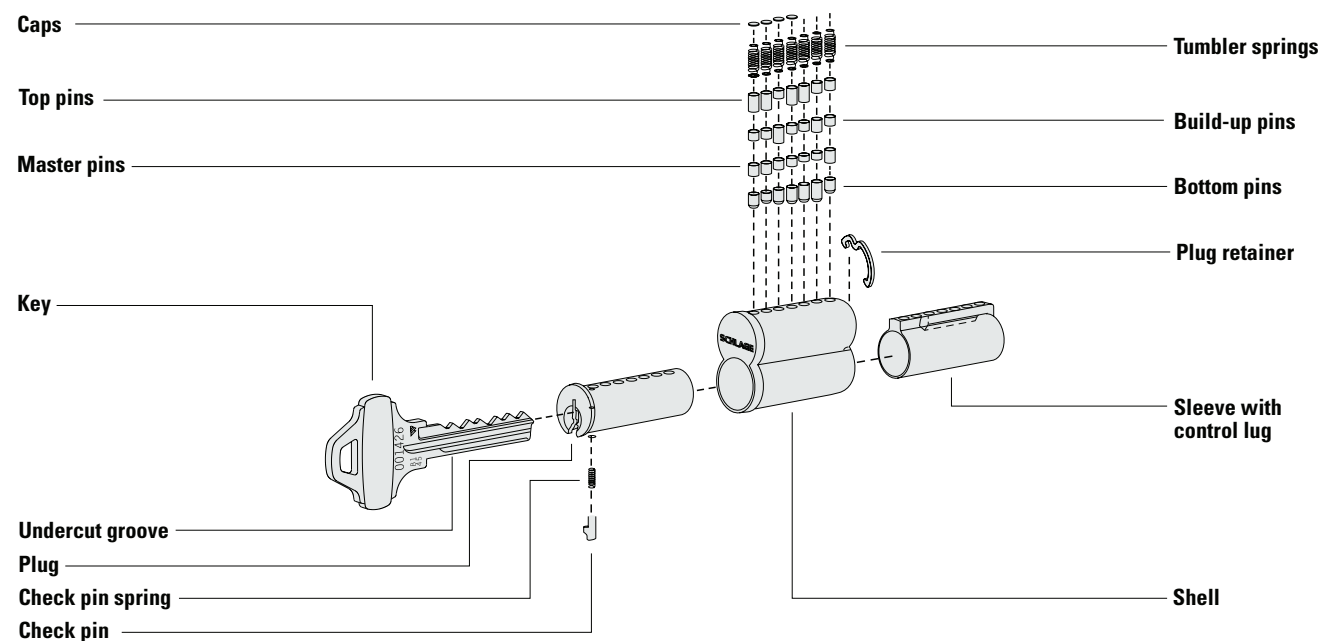
Lockset Series	Description	Number	Specify Finish
B500-Series	Outside	B610-204	605, 609, 612, 613, 619, 625, 626, and 716
	Inside	B610-281**	605, 609, 612, 613, 619, 625, 626, and 716
B600-Series	Outside	B610-282	605, 606, 609, 612, 613, 625, 626
	Inside	B610-281	See Note Below

**Note:** To order Primus XP add the suffix - XP to the Primus part number. (Example: 12-345-XP)

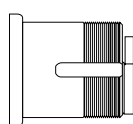
Tailpieces not included.

Specify finish of B610-014 snap-on faceplate ordered separately for inside of BC162 and B662.

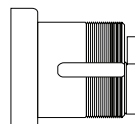
\*\*Inside housing does not include snap-on faceplate



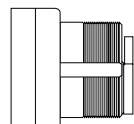
# Small Format Interchangeable Core Mortise Cylinders



Cylinder Only



Compr. Ring & Spring



With Blocking Ring



## Cylinders for Schlage L-Series Mortise Locks

	Design	Function	Core Mechanism			
			Everest Restricted (GD Suffix)	Keyed Construction (HD Suffix)	Disposable Construction (BDC Suffix)	Housing Less Core (BD Suffix)
	<b>L &amp; N Escutcheons</b> (cylinders with compression ring and spring)	All Except L9060 Outside	80-308	80-138	80-115	80-108
		L9060P Outside	80-304	80.134	80.134	80-104
	<b>Sectional Trim</b> (cylinder with compression ring, spring and 1/4" blocking ring).	All* Except L9060 Outside	80-301	80-131	80-131	80.101
		L9060 Outside	80-304 + 36-082-050	80-134 36-082-050	80-134 36-082-050	80-104 36-082-050

- Notes 1. Available 605, 606, 612, 613, 625, and 626 finish. Cores furnished 606 and 626 only.  
2. All cylinders are 1 3/8" long.



**L583-255**  
Cam for All Functions  
Except L9060 Outside



**K510-680**  
Cam for  
L9060 Outside

## Mortise Cylinders with Straight Cam for Exit Devices

Number	Core Type
80-302	Everest restricted core
80-110	Disposable constr. core
80-132	Keyed constr. core
80-102	Housing less core



**K510-730**  
Straight Cam,  
Other Applications

Furnished with compression ring, spring and 1/4" blocking ring.

- Notes 1. Available 605, 606, 612, 613, 625, and 626 finish. Cores furnished 606 and 626 only.  
2. All cylinders are 1 3/8" long.

# Small Format Interchangeable Core Cylinders for Exit Devices, Aluminum Doors



**Interchangeable Core Rim Cylinders for Exit Devices**

Number	Core Mechanism
80-329	Everest restricted keyway core
80-159	Keyed construction core
80-116	Disposable construction core
80-129	Less core

Available 605, 606, 609, 610, 612, 613, 625 and 626 finish.



**KS21F**



**KS72F**



**KS92M**

**Padlocks**

Part #	Shackle Dimensions					
	Width	Height	Depth	A	B	C
<b>LESS CYLINDER - SMALL FORMAT INTERCHANGEABLE CORE</b>						
<b>CHROME BRASS BODY</b>						
KS11A1200	1 <sup>25</sup> / <sub>32</sub> "	2 <sup>3</sup> / <sub>16</sub> "	7/8"	1/4"	3/4"	3/4"
KS11D1200	1 <sup>25</sup> / <sub>32</sub> "	2 <sup>3</sup> / <sub>16</sub> "	7/8"	1/4"	1 <sup>1</sup> / <sub>2</sub> "	3/4"
KS11F1200	1 <sup>25</sup> / <sub>32</sub> "	2 <sup>3</sup> / <sub>16</sub> "	7/8"	1/4"	2"	3/4"
KS11G1200	1 <sup>25</sup> / <sub>32</sub> "	2 <sup>3</sup> / <sub>16</sub> "	7/8"	1/4"	4"	3/4"
KS21A1200	1 <sup>25</sup> / <sub>32</sub> "	2 <sup>3</sup> / <sub>16</sub> "	7/8"	5/16"	3/4"	3/4"
KS21D1200	1 <sup>25</sup> / <sub>32</sub> "	2 <sup>3</sup> / <sub>16</sub> "	7/8"	5/16"	1 <sup>1</sup> / <sub>2</sub> "	3/4"
KS41F1200	1 <sup>25</sup> / <sub>32</sub> "	2 <sup>3</sup> / <sub>16</sub> "	7/8"	5/16"	2"	3/4"
KS21G1200	1 <sup>25</sup> / <sub>32</sub> "	2 <sup>3</sup> / <sub>16</sub> "	7/8"	5/16"	4"	3/4"
KS41A1200	1 <sup>15</sup> / <sub>16</sub> "	2 <sup>3</sup> / <sub>16</sub> "	7/8"	3/8"	3/4"	3/4"
KS41D1200	1 <sup>15</sup> / <sub>16</sub> "	2 <sup>3</sup> / <sub>16</sub> "	7/8"	3/8"	1 <sup>1</sup> / <sub>2</sub> "	3/4"
KS41F1200	1 <sup>15</sup> / <sub>16</sub> "	2 <sup>3</sup> / <sub>16</sub> "	7/8"	3/8"	2"	3/4"
KS41G1200	1 <sup>15</sup> / <sub>16</sub> "	2 <sup>3</sup> / <sub>16</sub> "	7/8"	3/8"	4"	3/4"
<b>STEEL BODY</b>						
KS72M1200	2 <sup>5</sup> / <sub>8</sub> "	2 <sup>3</sup> / <sub>8</sub> "	1 <sup>3</sup> / <sub>32</sub> "	7/16"	1"	7/8"
KS72F1200	2 <sup>5</sup> / <sub>8</sub> "	2 <sup>3</sup> / <sub>8</sub> "	1 <sup>3</sup> / <sub>32</sub> "	7/16"	2"	7/8"
KS82M1200	1 <sup>13</sup> / <sub>16</sub> "	3 <sup>7</sup> / <sub>16</sub> "	1 <sup>3</sup> / <sub>32</sub> "	5/16"	1"	3/4"
KS92M1200	2 <sup>1</sup> / <sub>8</sub> "	3 <sup>7</sup> / <sub>16</sub> "	1 <sup>3</sup> / <sub>16</sub> "	3/8"	1"	3/4"



**Mortise Cylinders with Straight Cam for Exit Devices**

Number	Core Type
80-303	Everest restricted core
80-111	Disposable constr. core
80-133	Keyed constr. core
80-103	Housing less core

Furnished with compression ring, spring and 7/16" blocking ring.  
These cylinders include set screw pack B220-050 for Adams Rite locks.



**K510-711**  
Adams Rite  
MS Cam

**Cylinders for Adams Rite 4070 Series Deadlocks**

Number	Core Type
80-305	Everest restricted core
80-113	Disposable constr. core
80-135	Keyed constr. core
80-105	Housing less core

Furnished with compression ring, spring and 1/4" blocking ring

Notes 1. Available 605, 606, 612, 613, 625, and 626 finish. Cores furnished 606 and 626 only.  
2. All cylinders are 1<sup>3</sup>/<sub>8</sub>" long.



**B520-378**  
Adams Rite  
4070 Cam



**Locking Cables**

**KC Series**

Part #	Length	Diameter
<b>LESS CYLINDER - SMALL FORMAT INTERCHANGEABLE CORE</b>		
<b>LOCKING CABLES</b>		
KC215A130	2"	5/8"
KC215B130	4"	5/8"
KC215E130	6"	5/8"